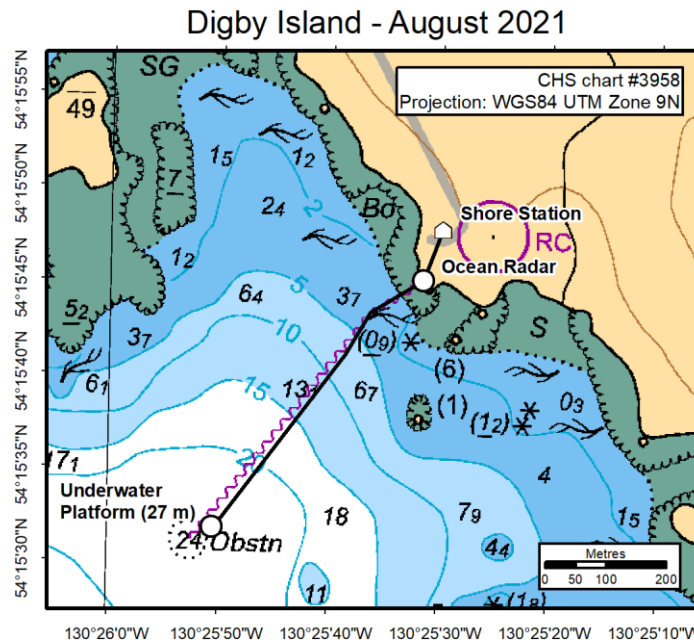


Information for Mariners – August 2021 Community Observatory Digby Island

Project: The Digby Island subsea platform, managed by Ocean Networks Canada (ONC) of the University of Victoria, contains a suite of instruments used for ocean observing. From the Shore Station, a marine cable extends to the shoreline, along the ocean bottom out to the instrument platform. The data and images are sent back to the University of Victoria. Project status, system information, and data are available from the ONC website: <http://www.oceannetworks.ca>

What: Marine cables and observatory systems (see web site for system details).

When: Latest system and instrument deployments in Digby Island: **02 June 2021**



These figures have been produced by the University of Victoria based on Canadian Hydrographic Service (CHS) charts, pursuant to CHS DULA CHS # 2019-1004-1260-UV. The incorporation of data sourced from CHS in these products shall not be construed as constituting an endorsement by CHS of these products. These products do not meet the requirements of the Charts and Nautical Publications Regulations, 1995 under the Canada Shipping Act, 2001. Official charts and publications; corrected and up-to-date, must be used to meet the requirements of those regulations.

Installations:

| Name | Latitude | Longitude | Depth | Description |
|---------------------|----------|------------|-------|---------------------------------|
| Instrument Platform | 54.25884 | -130.43070 | 27 m | 1.5 m grey rectangular platform |

Cable: A cable runs from the shore station located at 54.26332, -130.42495 to the shoreline and then out to the instrument platform. This cable is shown on Chart 3958 and 3957.

Full cable routes and waypoints are available for use with Electronic Navigation Systems from the ONC website: <http://www.oceannetworks.ca/installations/notice-mariners>

Contacts: If you have any concerns, or would like further information, please contact either: Ian Kulin, Ocean Networks Canada's Director of Observatory Physical Operations at ikulin@uvic.ca or 250-721-6279, or ONC GIS Specialists at GIS@oceannetworks.ca.